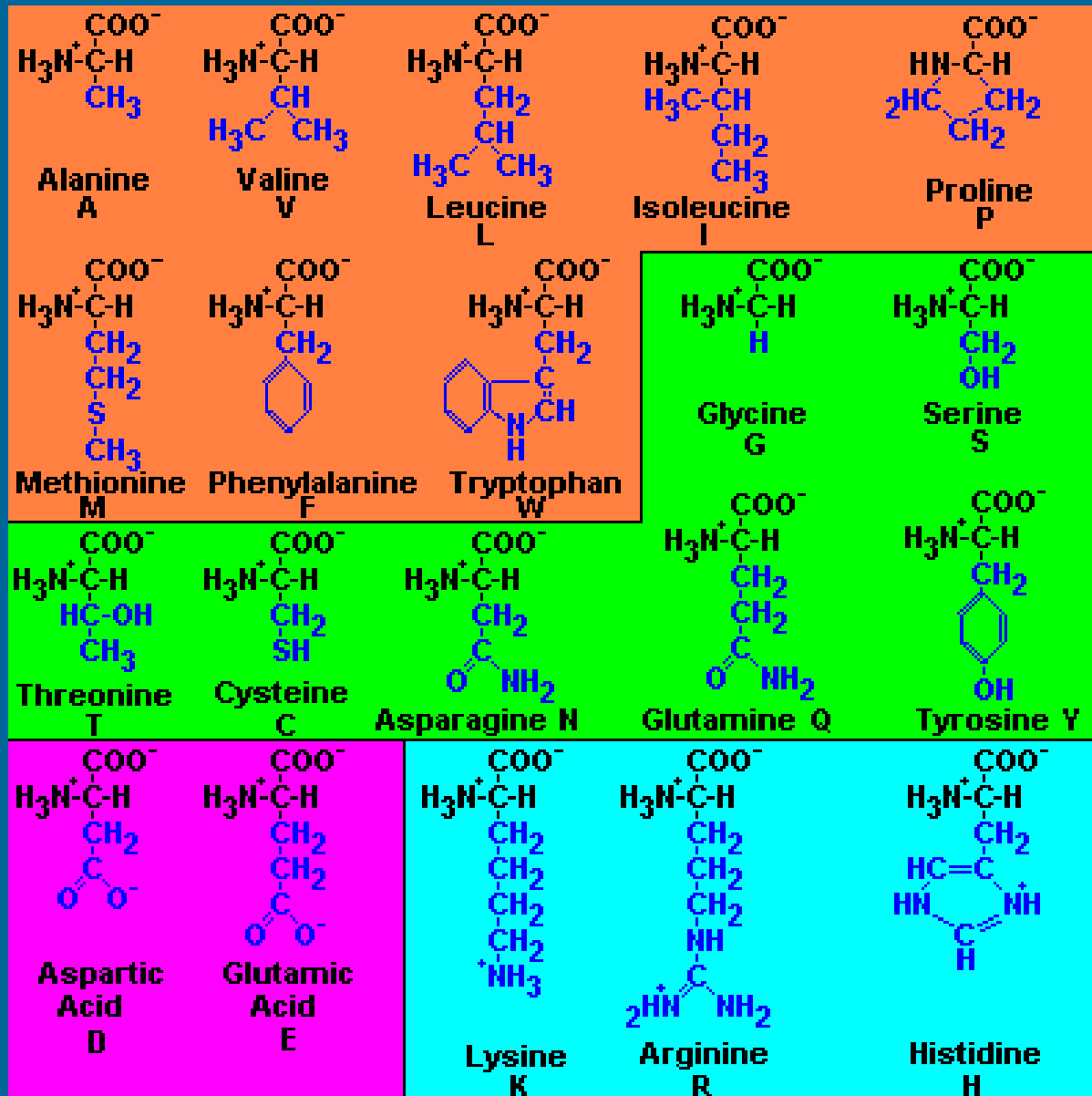


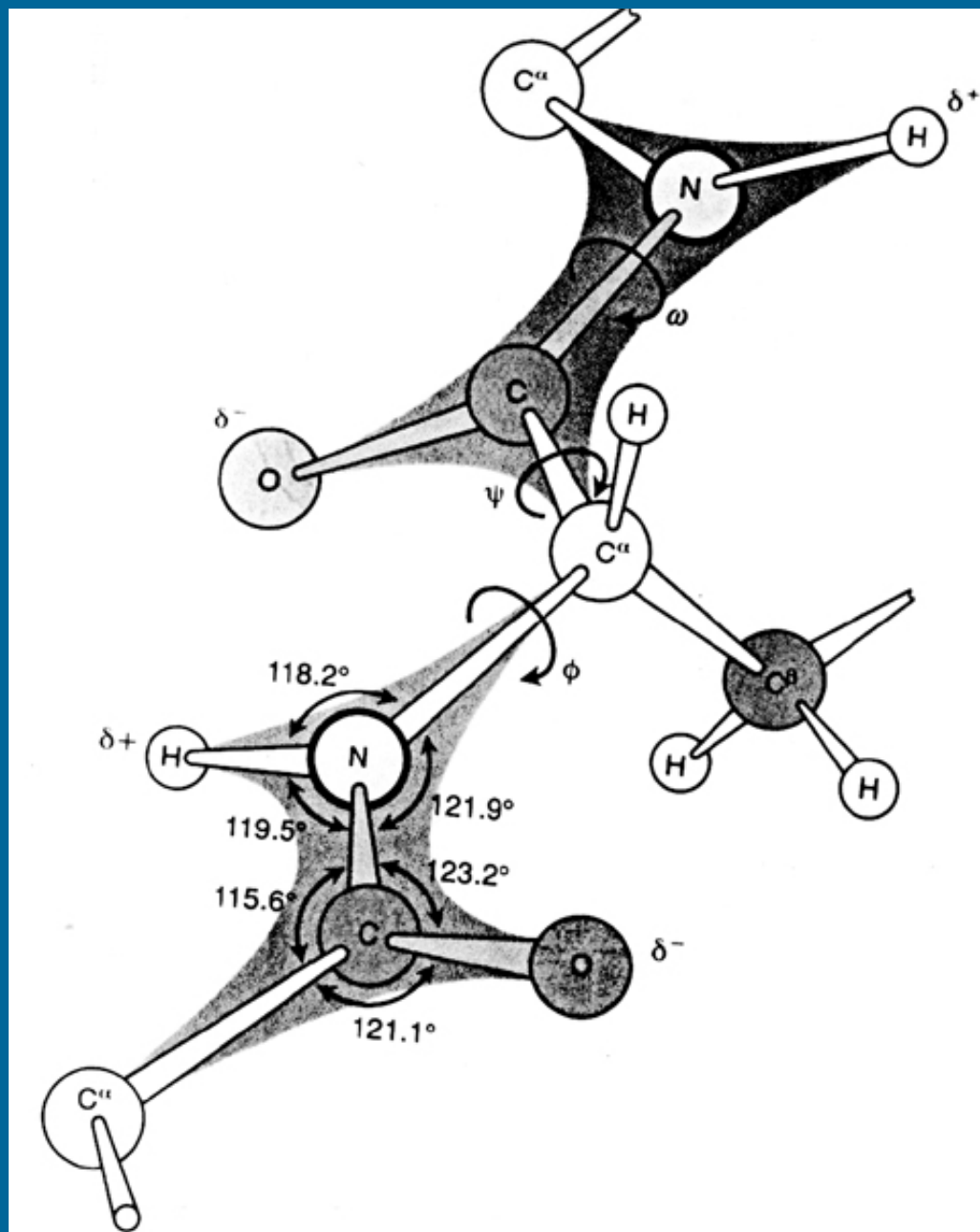
Makromolekulák

Simon István

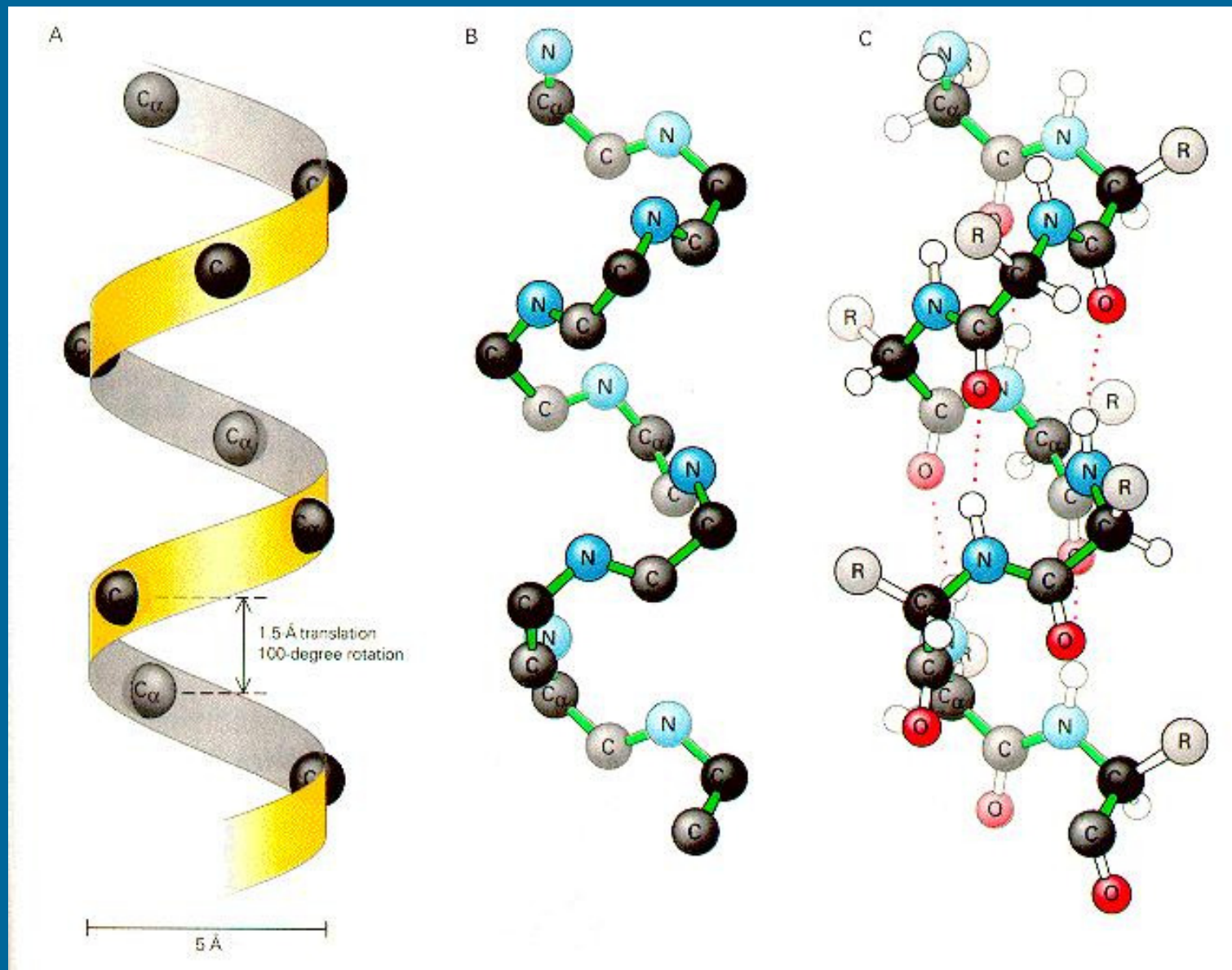
Fehérje építő aminosavak



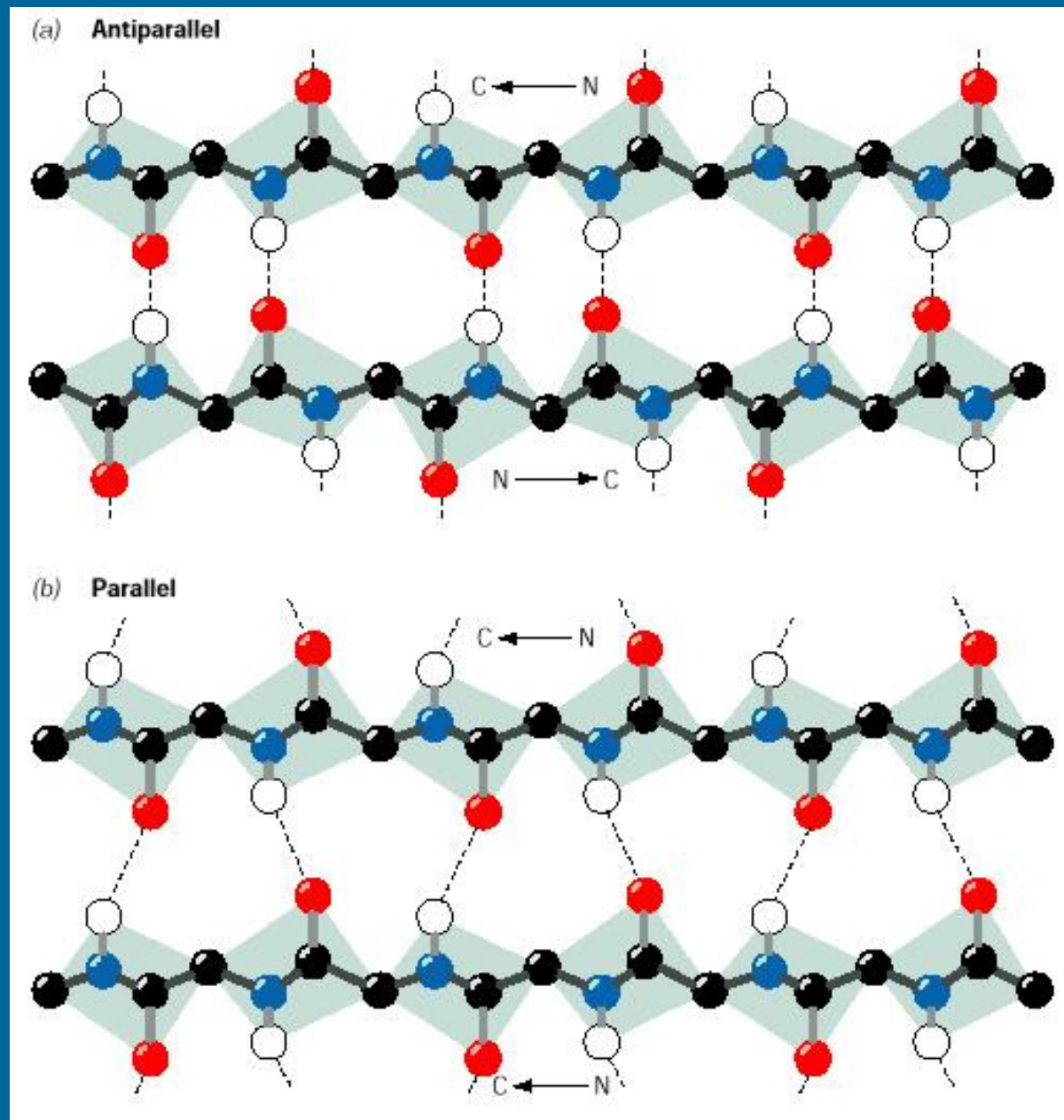
A peptid kötés



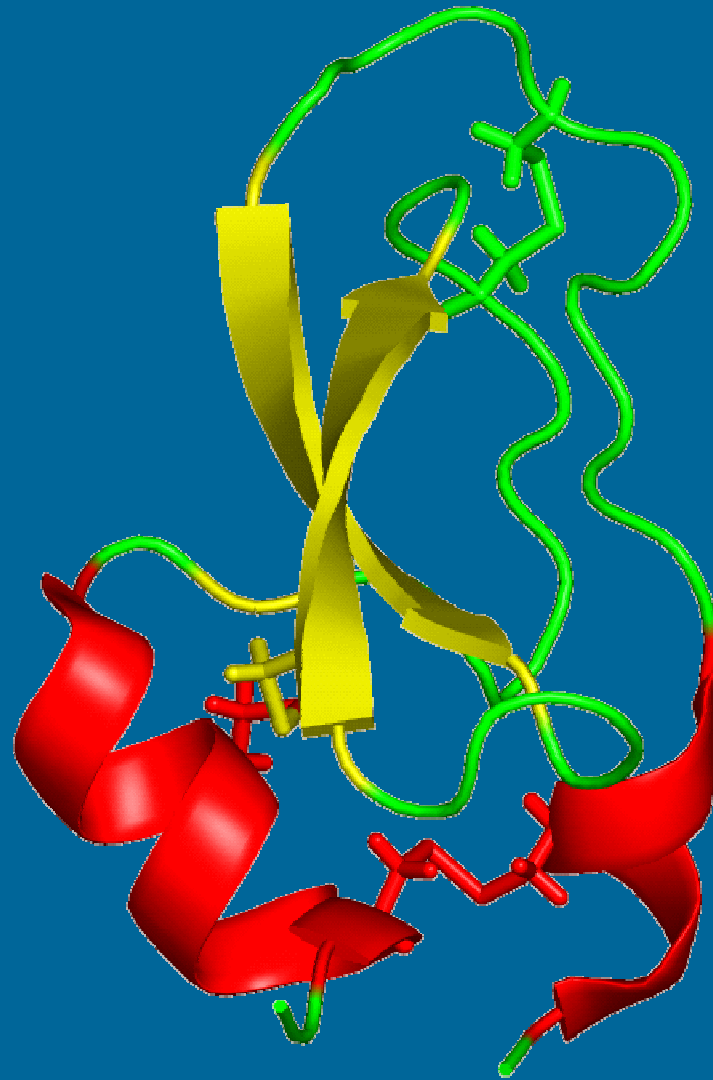
α -hélix



β -lemez

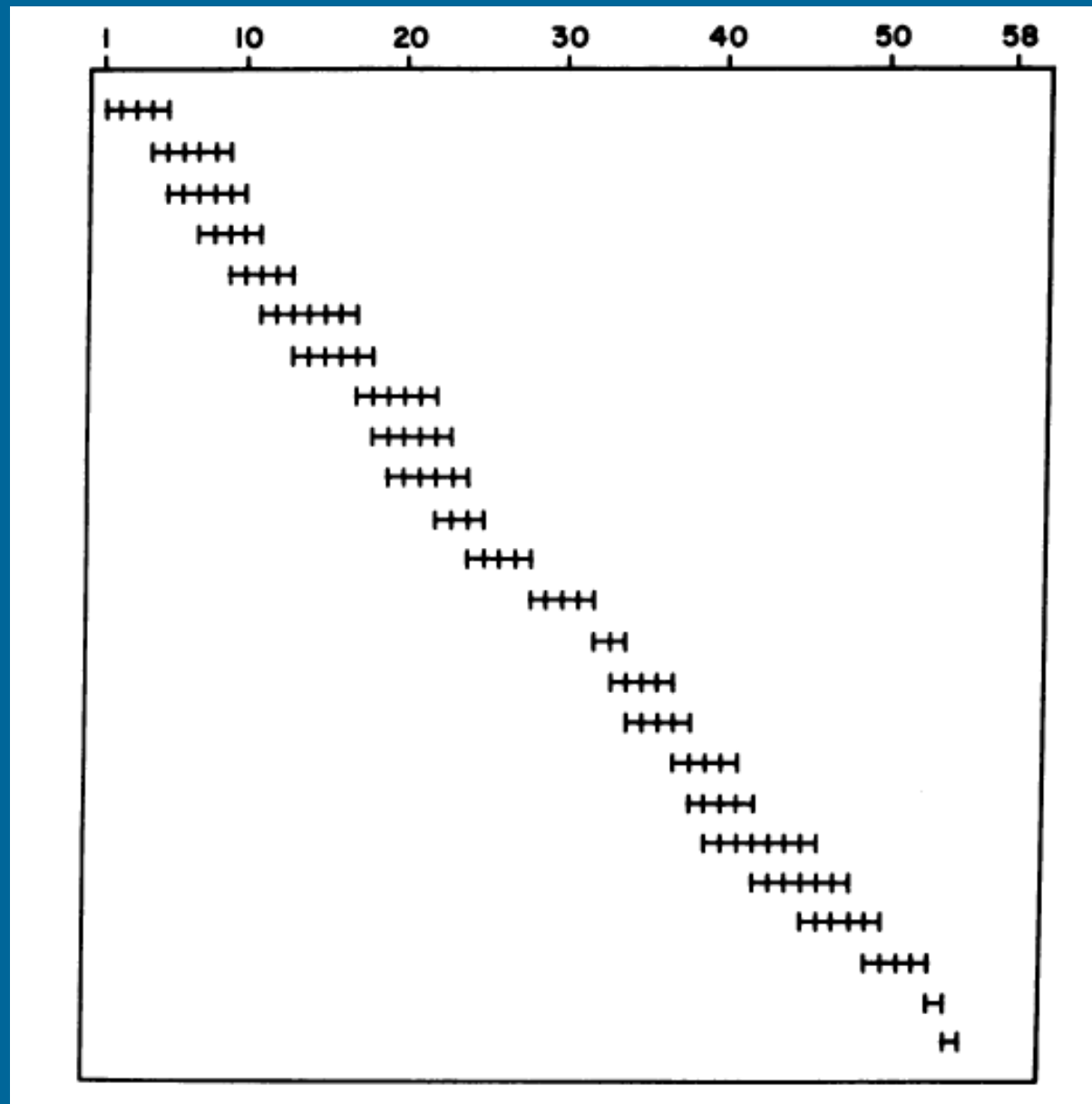


5pti: BOVINE PANCREATIC TRYPSIN INHIBITOR

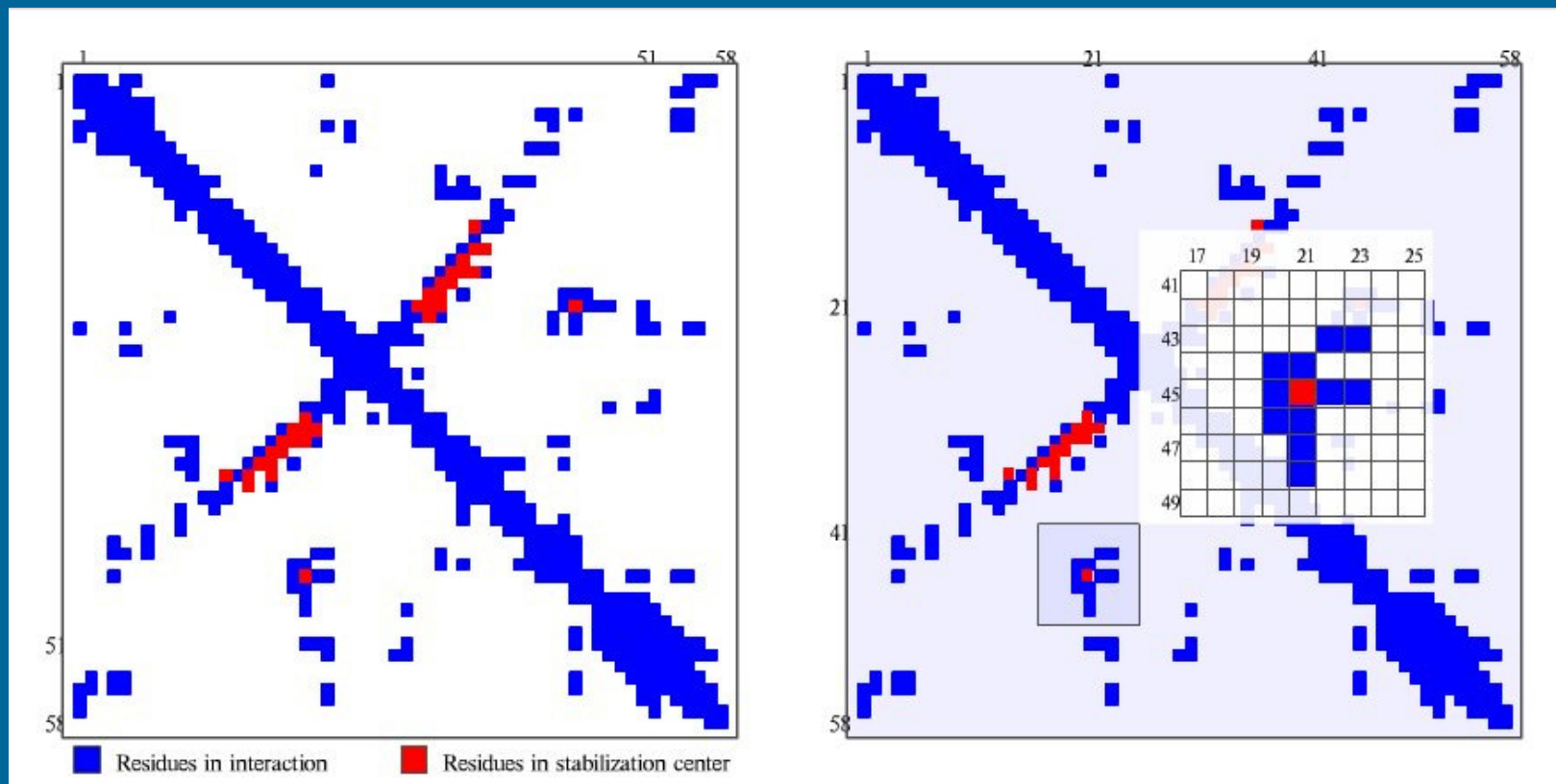


N-terminális

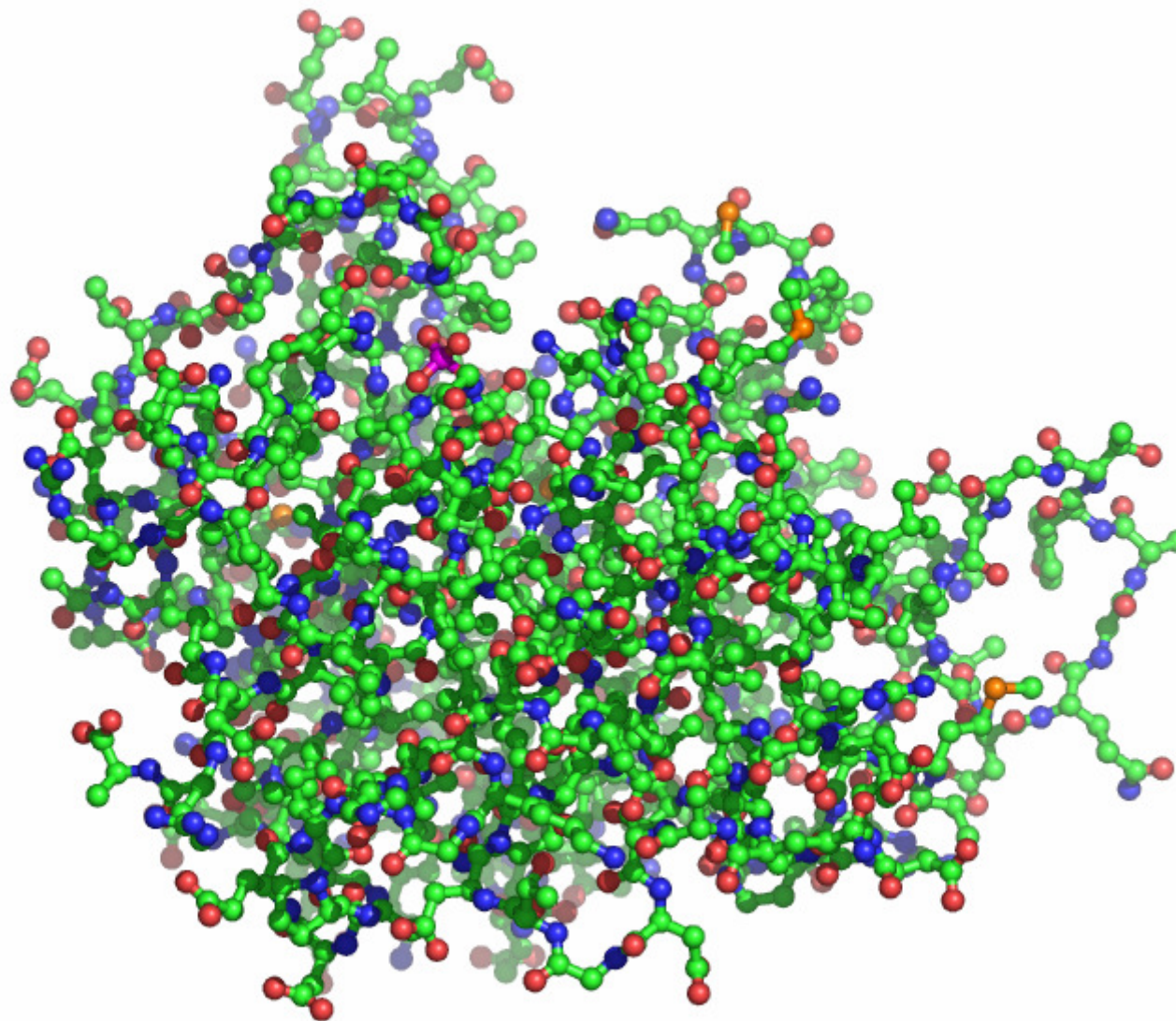
BOVINE PANCREATIC TRYPSIN INHIBITOR



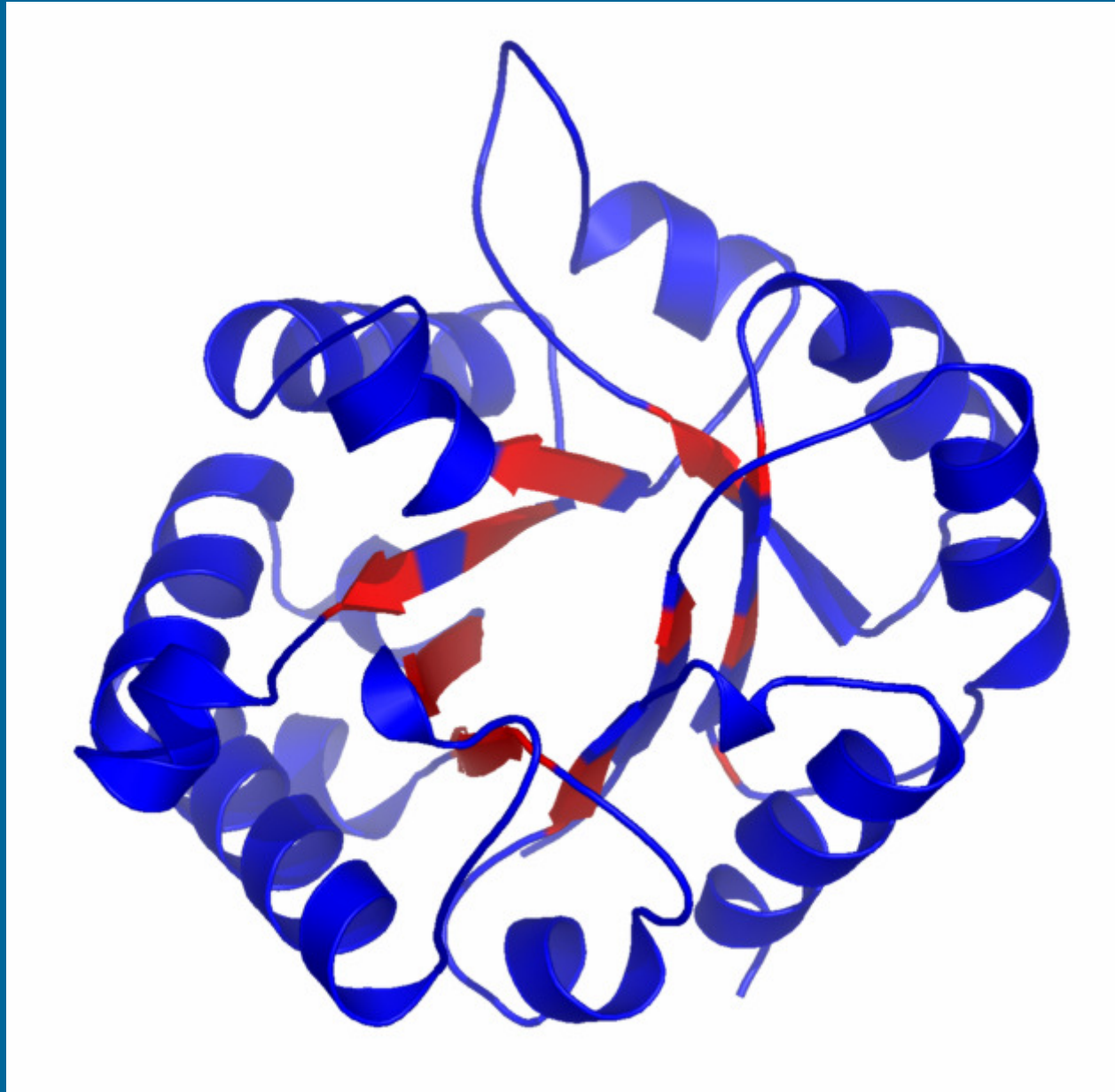
Stabilizációs centrumok (5pti)



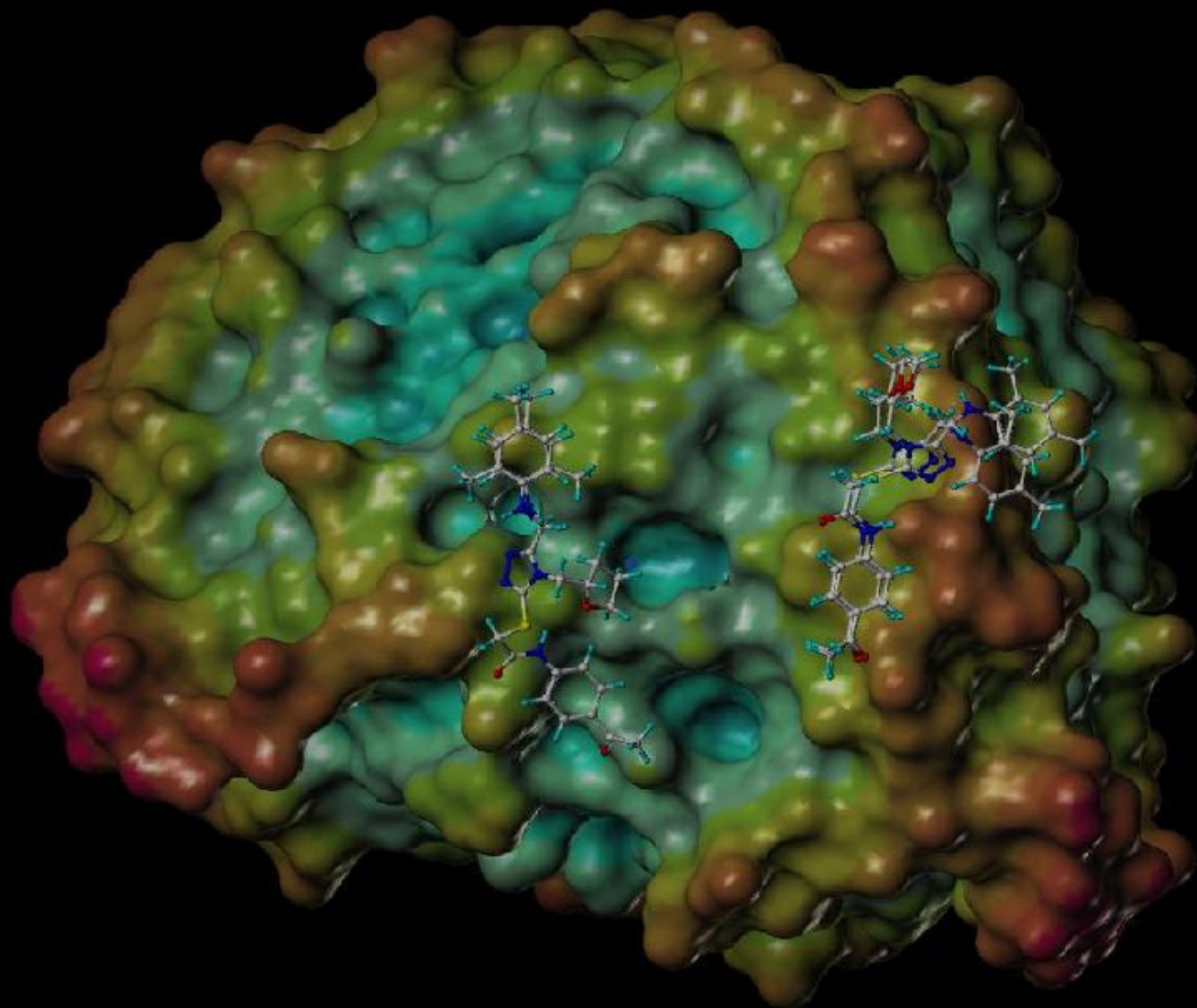
A trióz-foszfát izomeráz enzim szerkezete



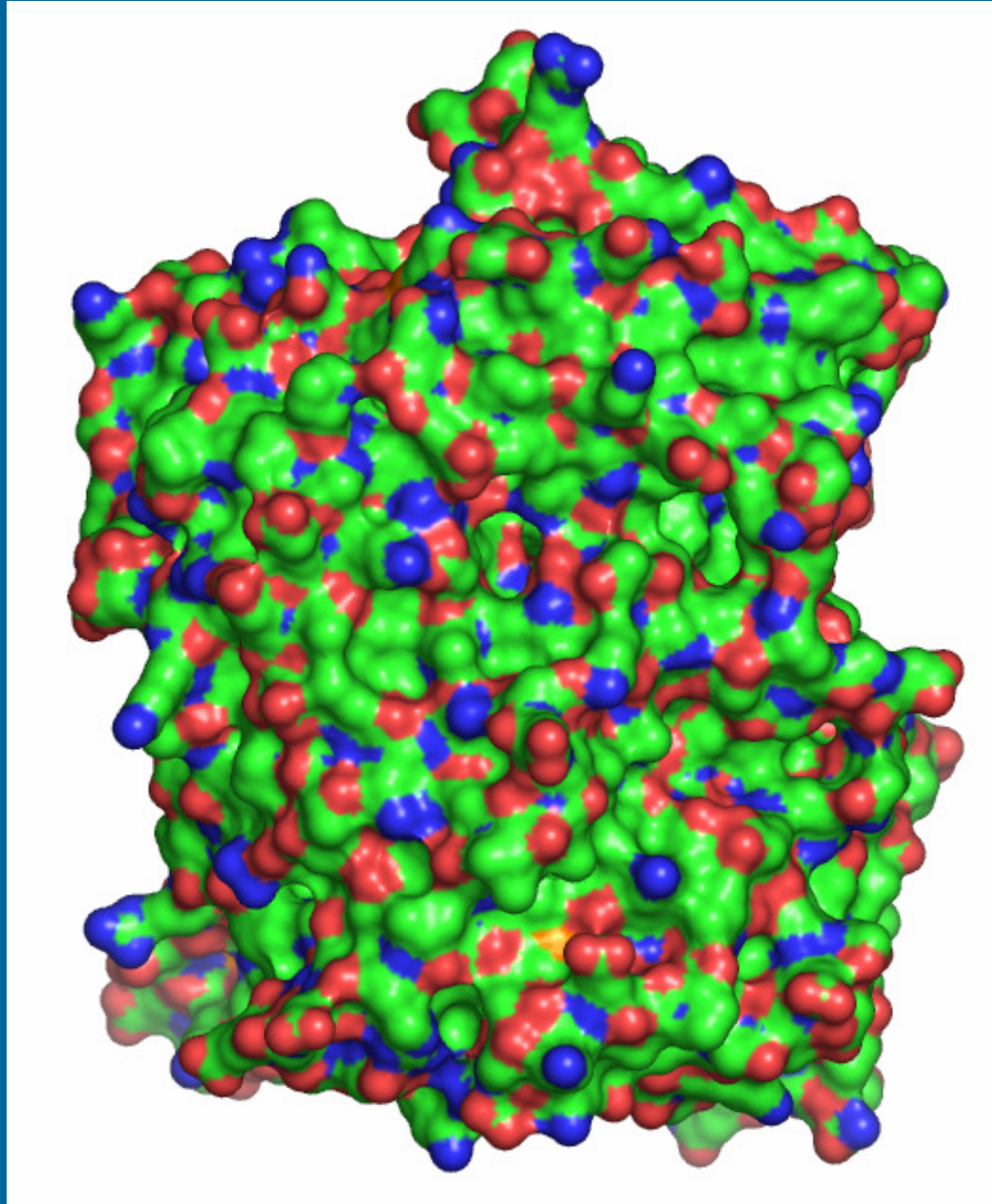
Stabilizáló aminosavak a trióz-foszfát izomeráz szerkezetében



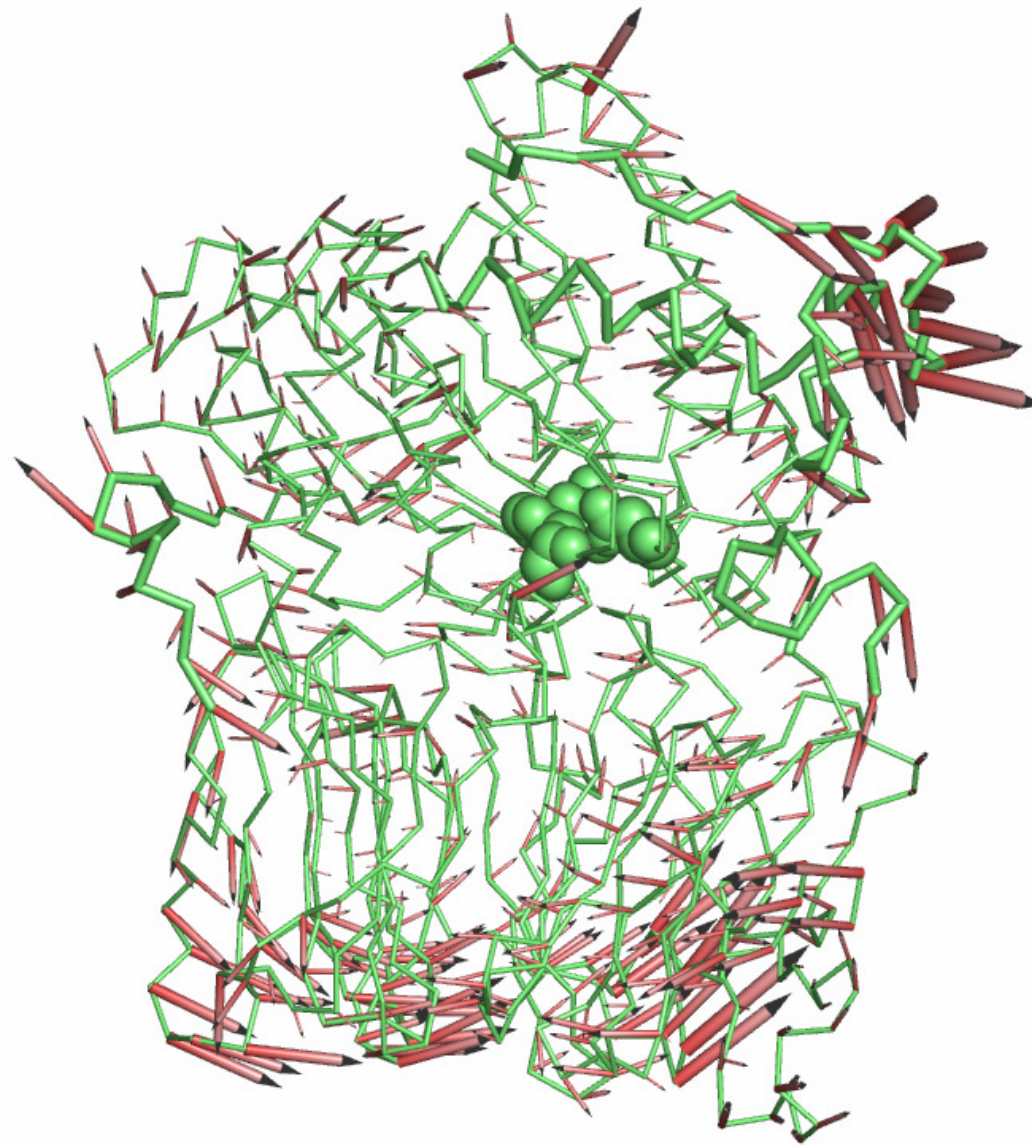
Mycobacterium tuberculosis dUTPase



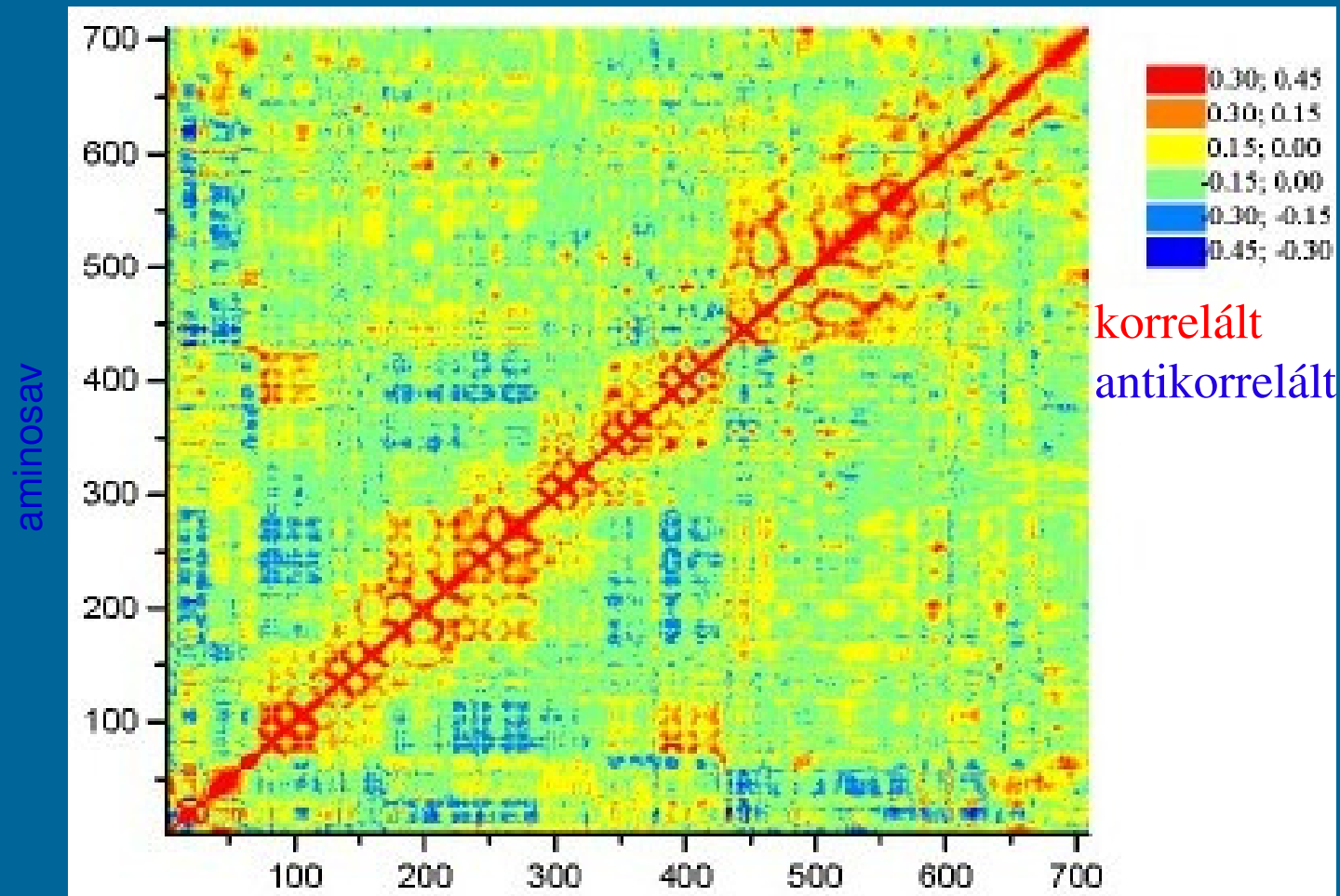
A prolin oligopeptidáz enzim szerkezete



Fő mozgás-irányok



A prolyl-oligopeptidáz szerkezeti dinamikája

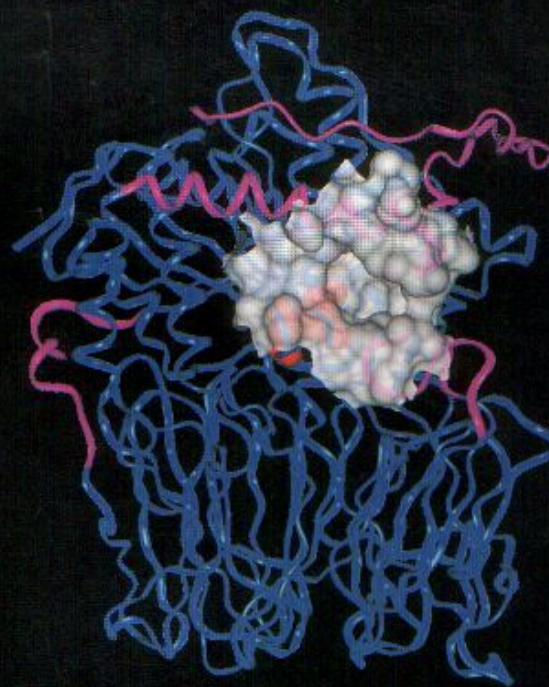


Volume 60, Number 3, August 15, 2005

Articles published online in Wiley InterScience, 10 May 2005–23 June 2005

PROTEINS

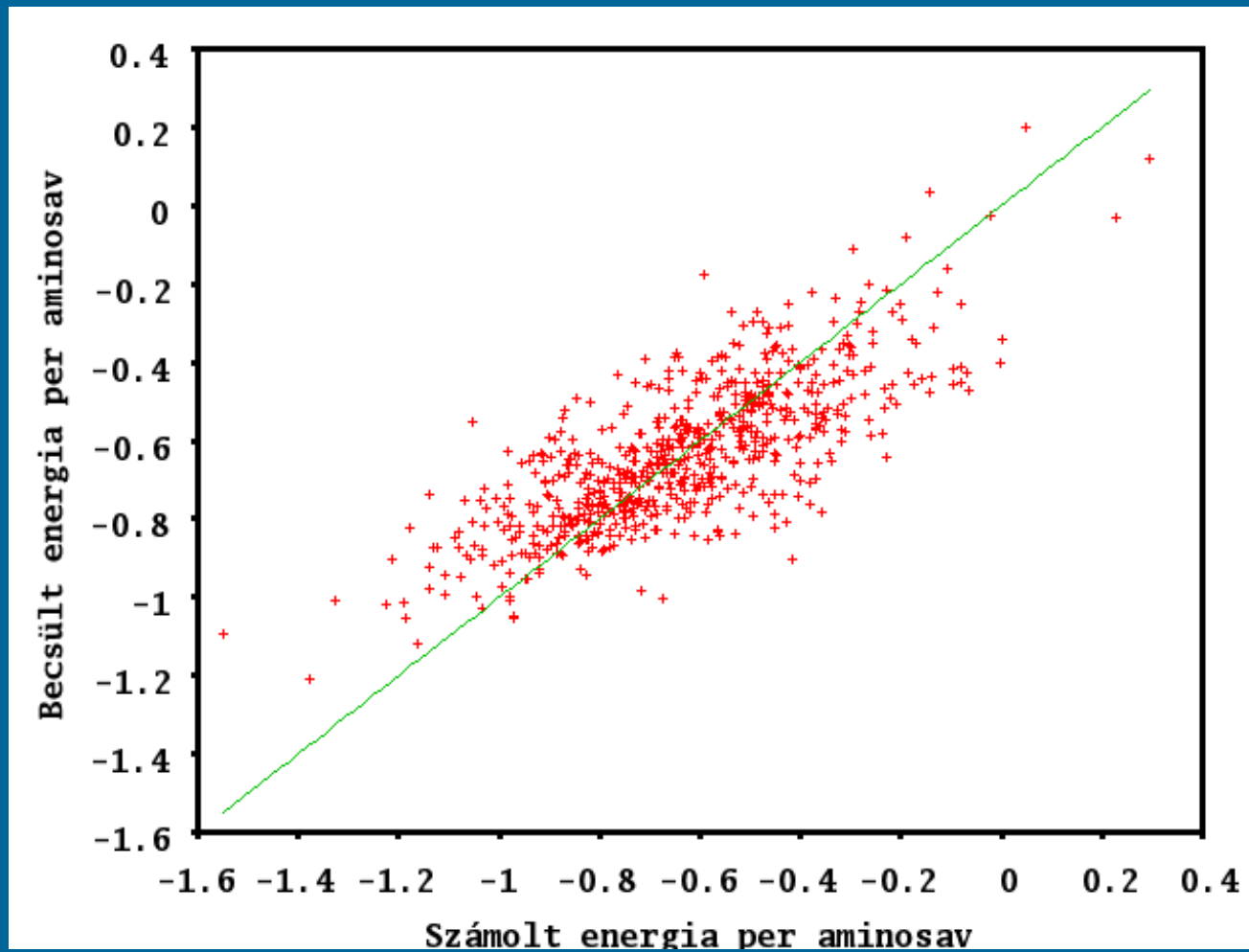
Structure, Function, and Bioinformatics



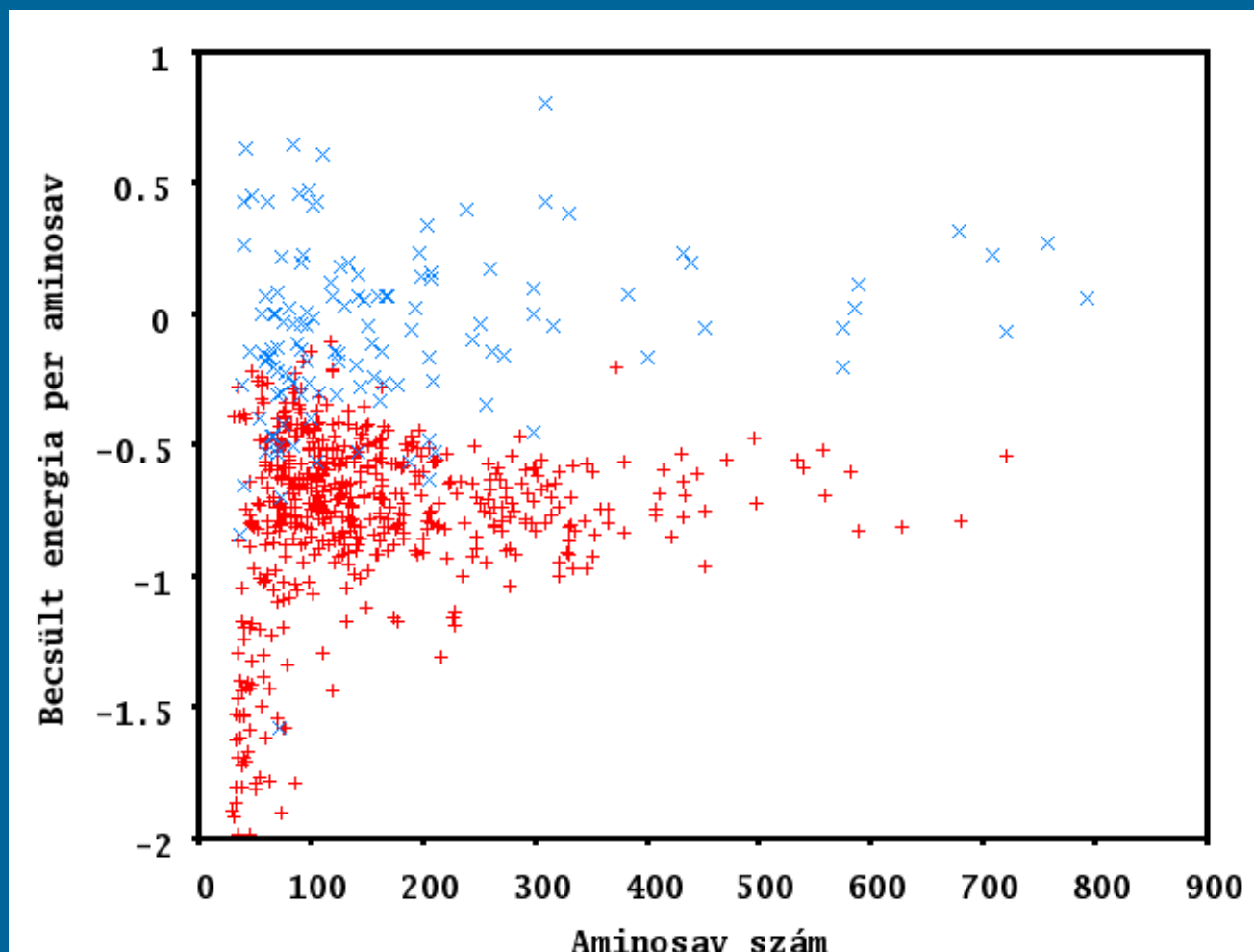
 **WILEY-LISS**
ISSN 0887-3585

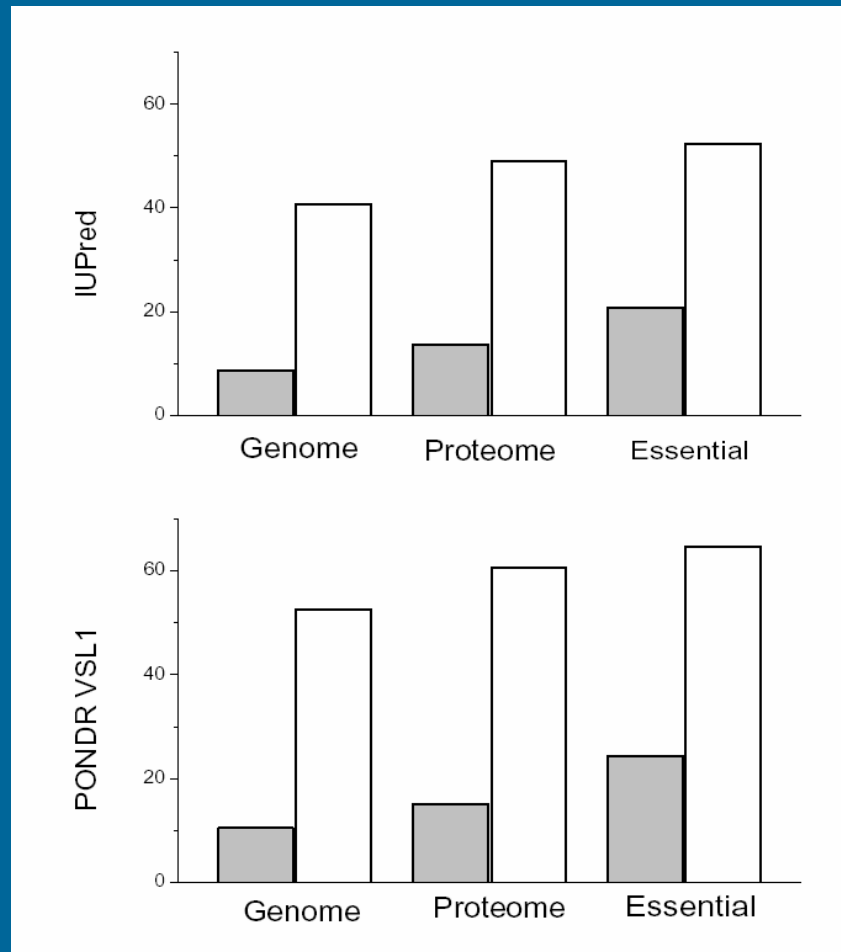
ONLINE SUBMISSION AND PEER REVIEW
prot-wiley.manuscriptcentral.com

Aminosav párok kölcsönhatási energiája



Rendezett és rendezetlen fehérjék párkölcsönhatási energiája





A legalább 30 aminosav hosszúságú rendezetlen szakaszokat tartalmazó fehérjék aránya *E.coli*-ban (sötét) és élesztőben (világos) IUPred-del és PONDRVSL1 módszerrel becsülve

Kölcsönható fehérjék az élesztőben

